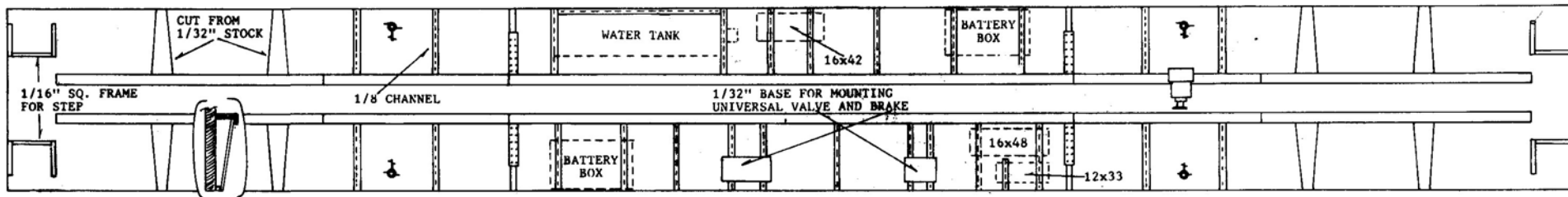


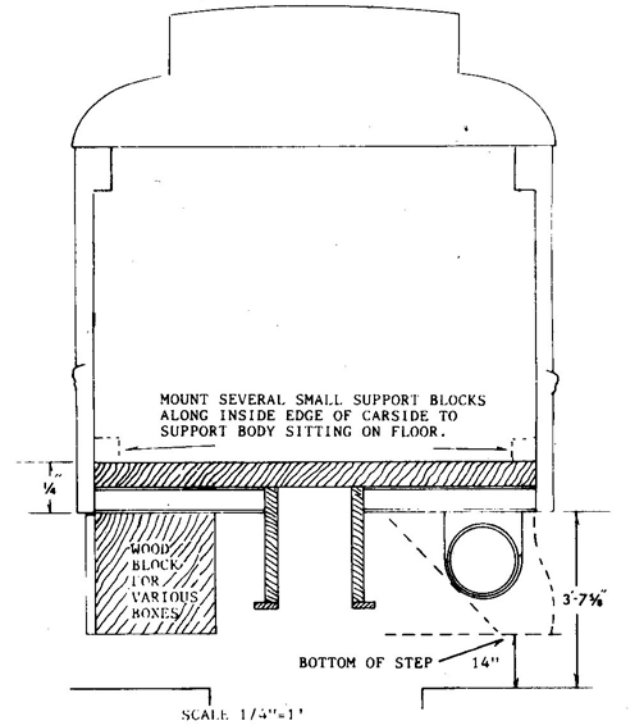
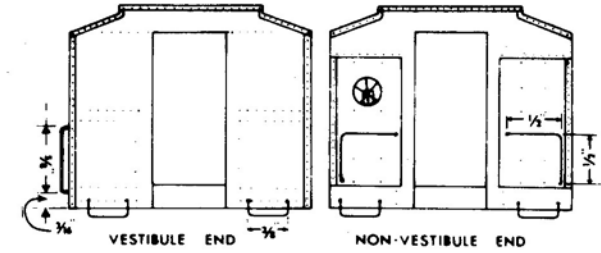
SUGGESTED UNDERNEATH LAYOUT...PULLMAN STANDARD HEAVYWEIGHT, PRE-A/C



THIS HEIGHT SHOULD BE BASED ON BOLSTER DEPTH YOU NEED FOR TRUCKS YOU PLAN TO USE.

1/16 x 5/8 CENTERSILL

.020 x 1/8" WOOD STRIP FOR FLANGE.



stripwood is also supplied to create the flange effect on these centersills.

Place the cast crossbearers in position first, even with the outside edge of the floor, and fasten the centersills in place against them. Then add the 1/8" channel, to support components as shown.

Add all underbody components, including the necessary wood blocks for boxes. Place the boxes right up against the edge of the floor, unless otherwise indicated. The underframe plan shows the typical arrangement of steamtraps universal

valve, and generator, although many variations occurred, and you may prefer to relocate these and other components to suit your own taste or a particular prototype. We suggest you add grab irons to the observation end sill now, drill it for the brake staff, and place it on the end of the floor to support placement of the steps.

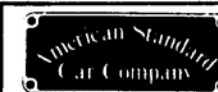
In mounting the brake cylinder, be sure to fasten the levers to it before you fasten the cylinder to the floor, as it may be necessary to snip off the ends of the levers so they will fit against the centersill.

HANDRAILS AND RUNG STEPS.

On many types of equipment, such as diners, club-baggage cars, and most kinds of head-end cars, etc., there are grabirons and rung steps at the doors and at the corners. They should be added last in the assembly process to avoid damage. The bottom edge of the side of the car can be drilled slightly to allow these items to be mounted into the side, and they will not have to be stuck into the floor.

WE RESERVE THE RIGHT TO CORRECT ERRORS, CHANGE PRICES AND MODIFY DESIGNS WITHOUT NOTICE AND WITHOUT PRIOR OBLIGATION TO PREVIOUS PURCHASERS.

**KIT 3410
12 SECTION -
1 DRAWING ROOM**



P.O. BOX 394
CRYSTAL LAKE, IL 60014